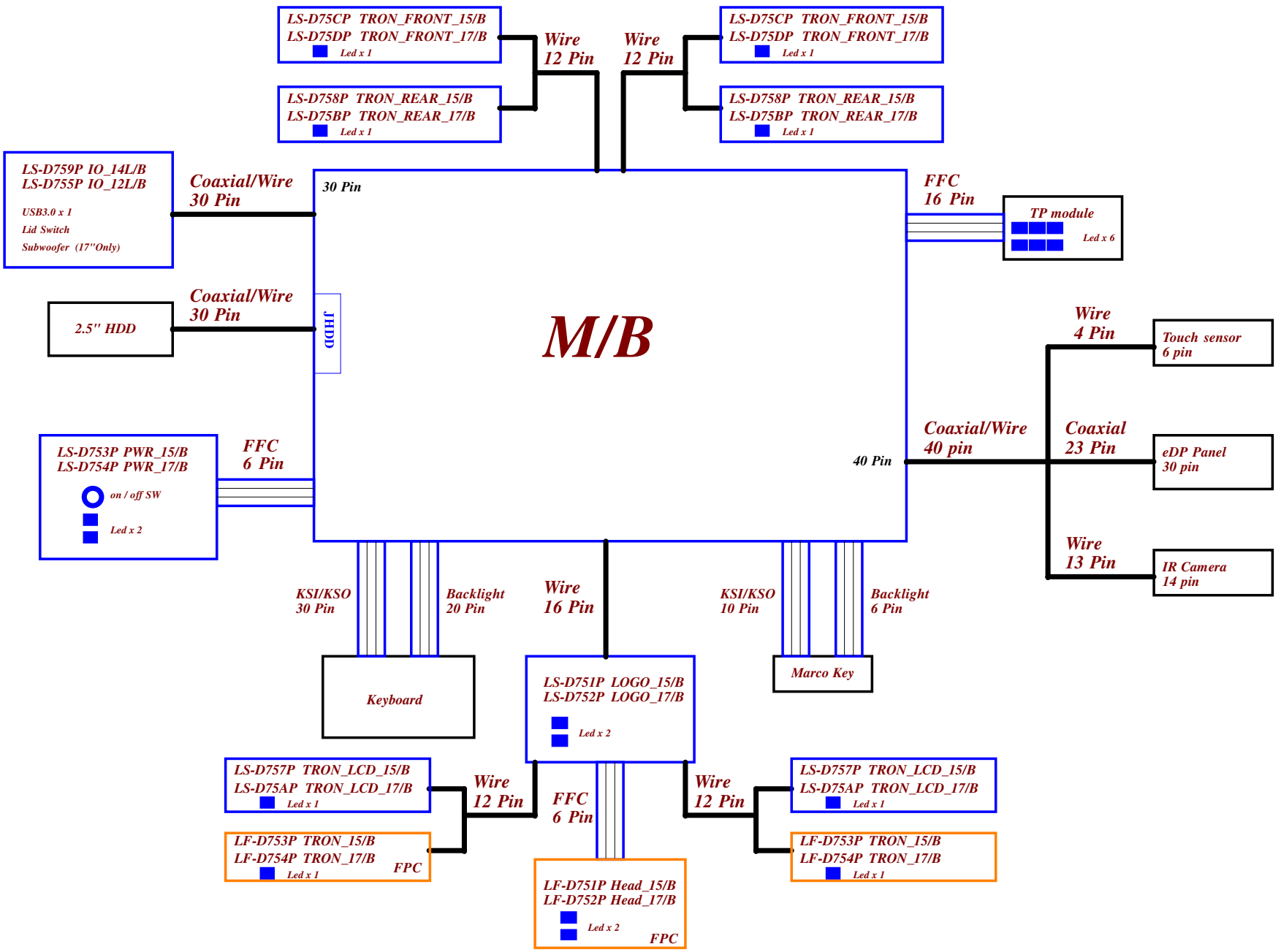
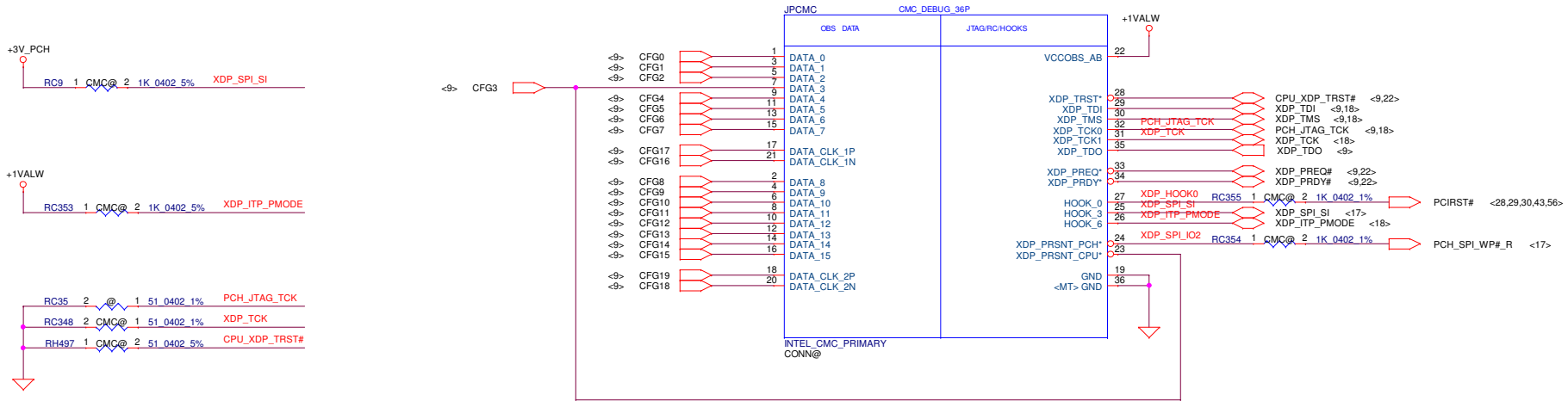


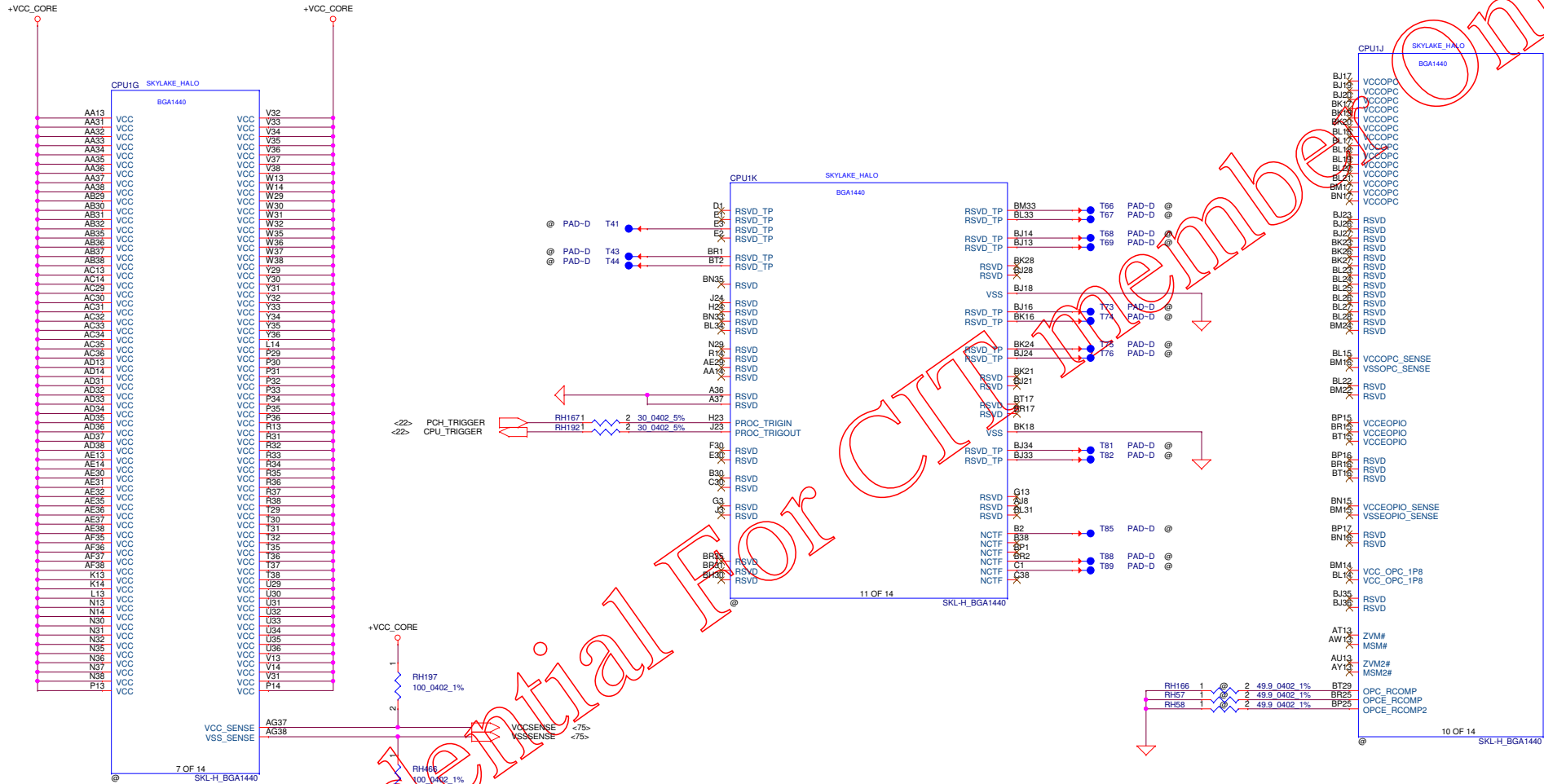
PCB

FPC

Module

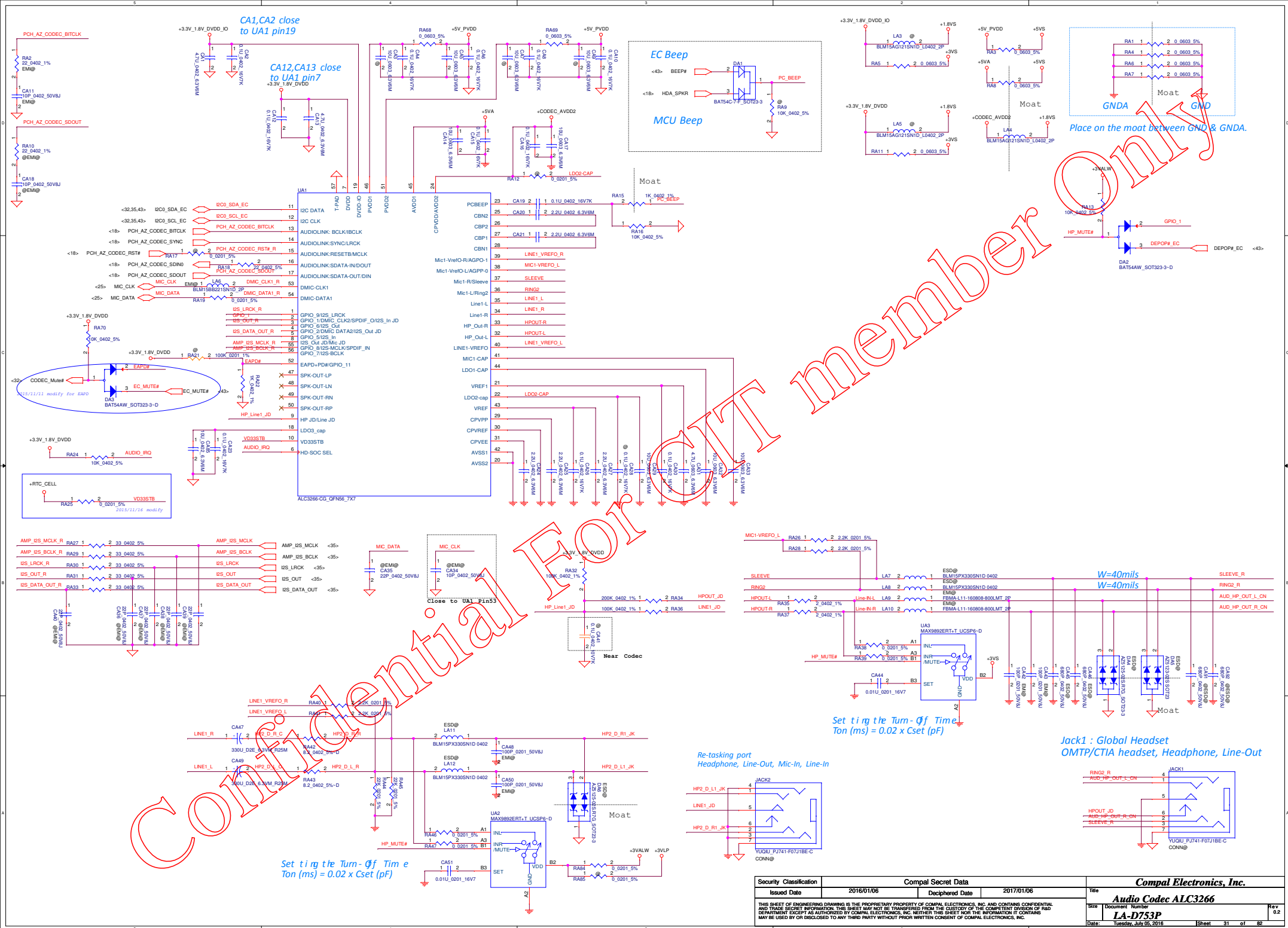




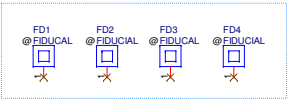


Confidential For CTT member Only

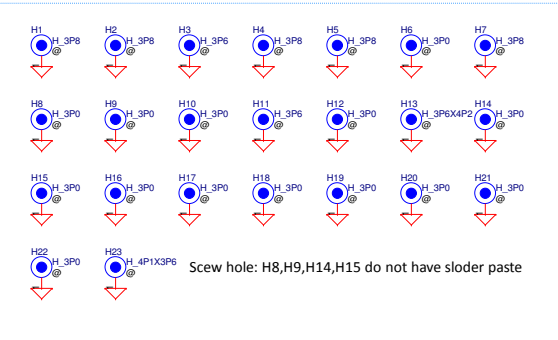
| | | | | | | | |
|---|--|--------------------|--|------------------------|-----|--|--|
| Security Classification | | Compal Secret Data | | Title | | | |
| Issued Date | | Deciphered Date | | Reversed | | | |
| 2016/01/06 | | 2017/01/06 | | LA-D753P | | | |
| THIS SHEET OF ENGINEERING DRAWING IS THE PROPRIETARY PROPERTY OF COMPAL ELECTRONICS, INC. AND CONTAINS CONFIDENTIAL AND TRADE SECRET INFORMATION. THIS SHEET MAY NOT BE TRANSFERRED FROM THE CUSTODY OF THE COMPETENT DIVISION OF R&D DEPARTMENT EXCEPT AS AUTHORIZED BY COMPAL ELECTRONICS, INC. NEITHER THIS SHEET NOR THE INFORMATION IT CONTAINS MAY BE USED BY OR DISCLOSED TO ANY THIRD PARTY WITHOUT PRIOR WRITTEN CONSENT OF COMPAL ELECTRONICS, INC. | | | | Date: | Rev | | |
| | | | | Tuesday, July 05, 2016 | 0.2 | | |
| | | | | Sheet 23 of 82 | | | |



Fiducial Mark

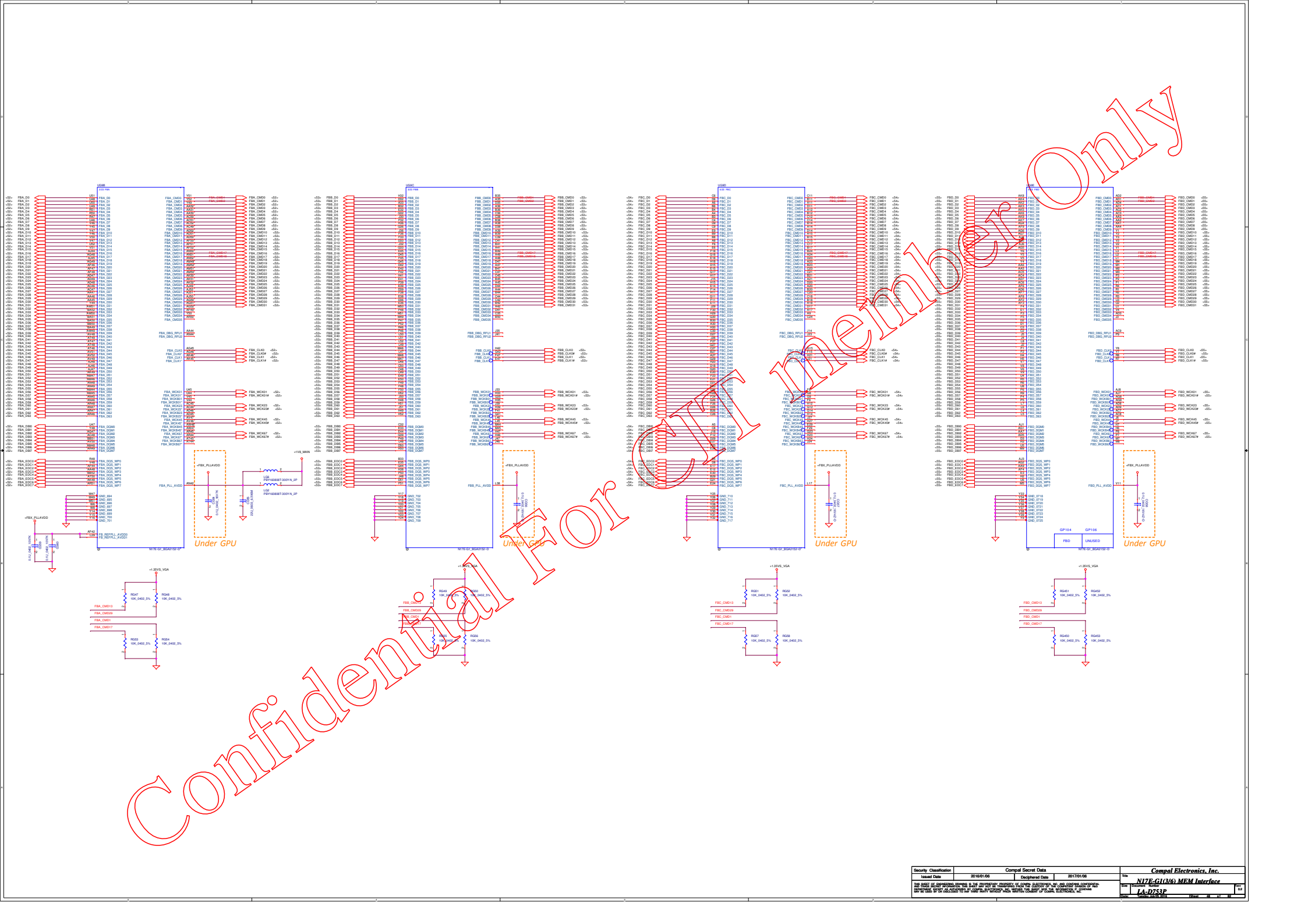


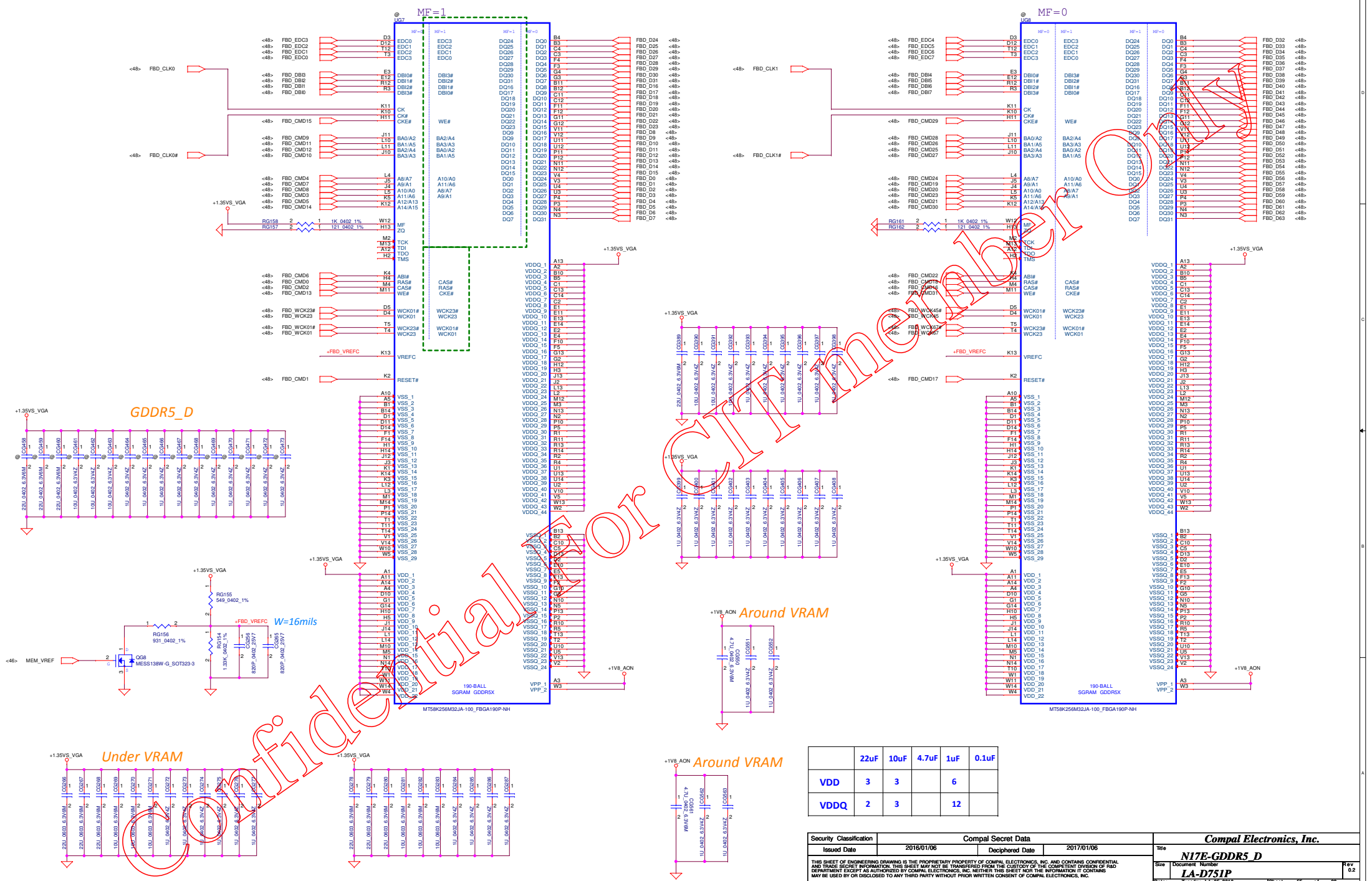
PCB Screw Hole



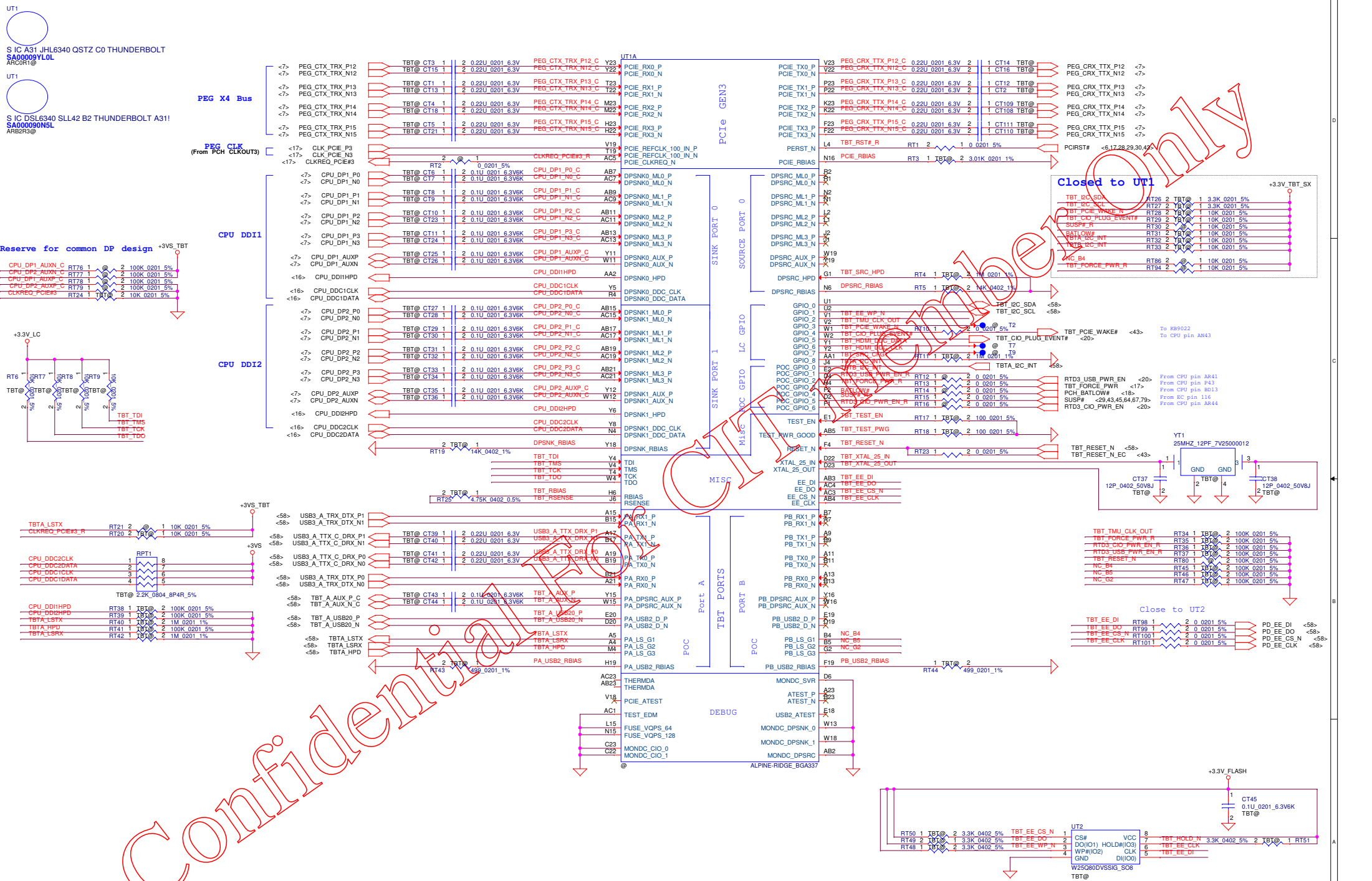
Confidential For CTT member Only

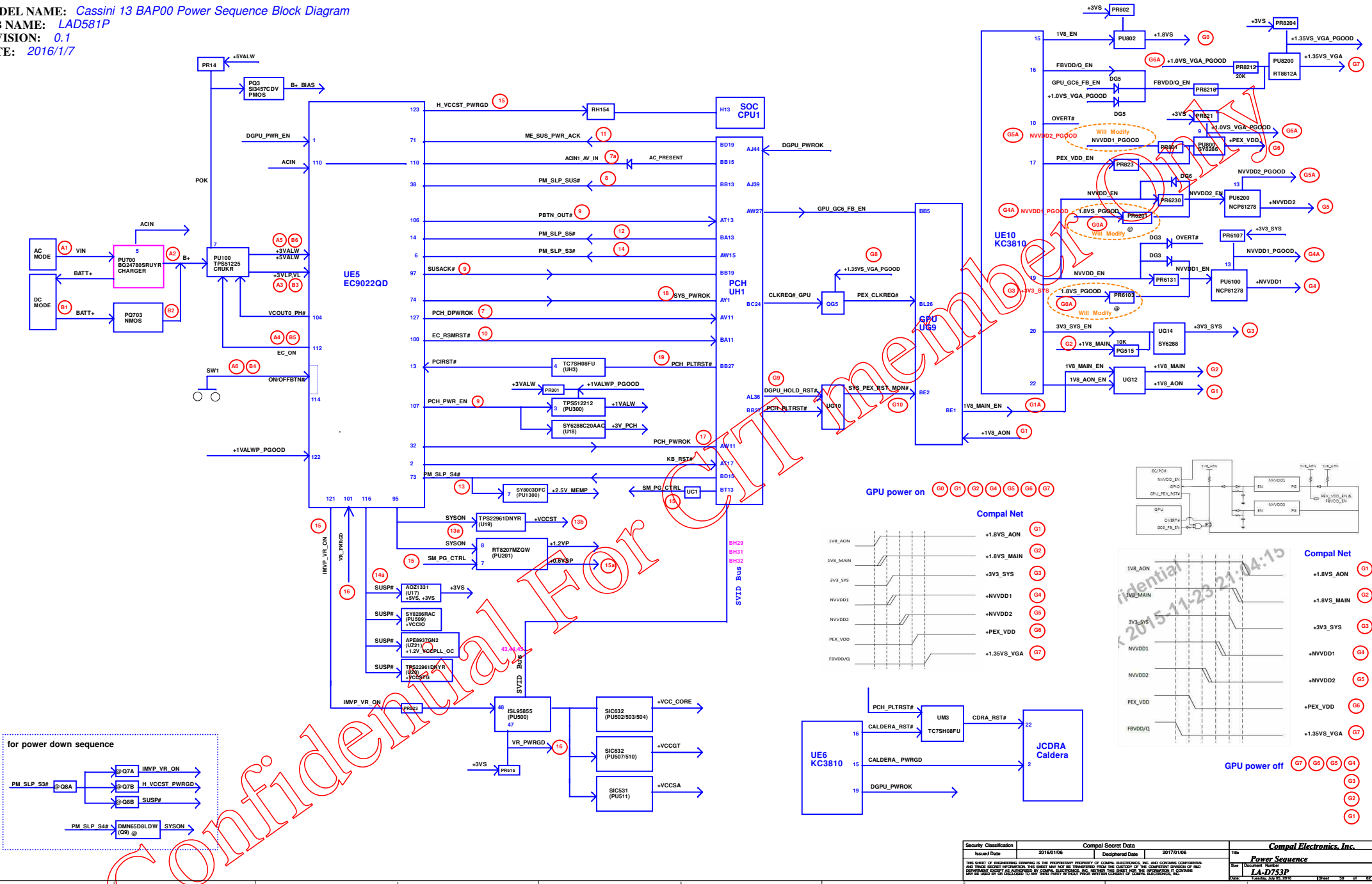
| | | | | | |
|---|------------|--------------------|------------|--------------------------|-----------------|
| Security Classification | | Compal Secret Data | | Compal Electronics, Inc. | |
| Issued Date | 2016/01/06 | Deciphered Date | 2017/01/06 | Title | Screw Hole |
| THIS SHEET OF ENGINEERING DRAWING IS THE PROPRIETARY PROPERTY OF COMPAL ELECTRONICS, INC. AND CONTAINS CONFIDENTIAL AND TRADE SECRET INFORMATION. THIS SHEET MAY NOT BE TRANSFERRED FROM THE CUSTODY OF THE COMPETENT DIVISION OF R&D DEPARTMENT EXCEPT AS AUTHORIZED BY COMPAL ELECTRONICS, INC. NEITHER THIS SHEET NOR THE INFORMATION IT CONTAINS MAY BE USED BY OR DISCLOSED TO ANY THIRD PARTY WITHOUT PRIOR WRITTEN CONSENT OF COMPAL ELECTRONICS, INC. | | | | Size | Document Number |
| | | | | Date | LA-D753P |
| | | | | Rev | 0.2 |
| | | | | Sheet | 44 of 82 |

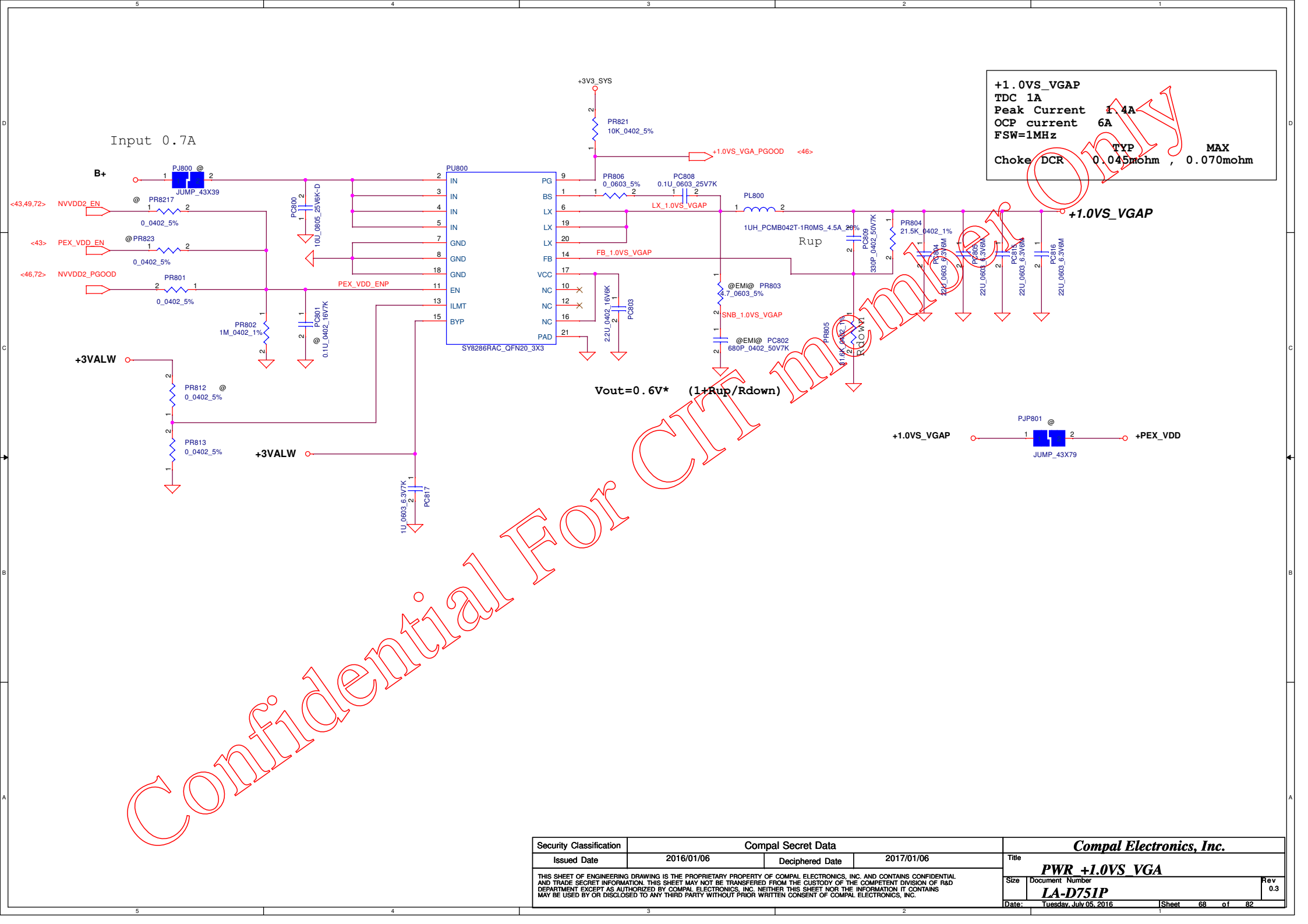


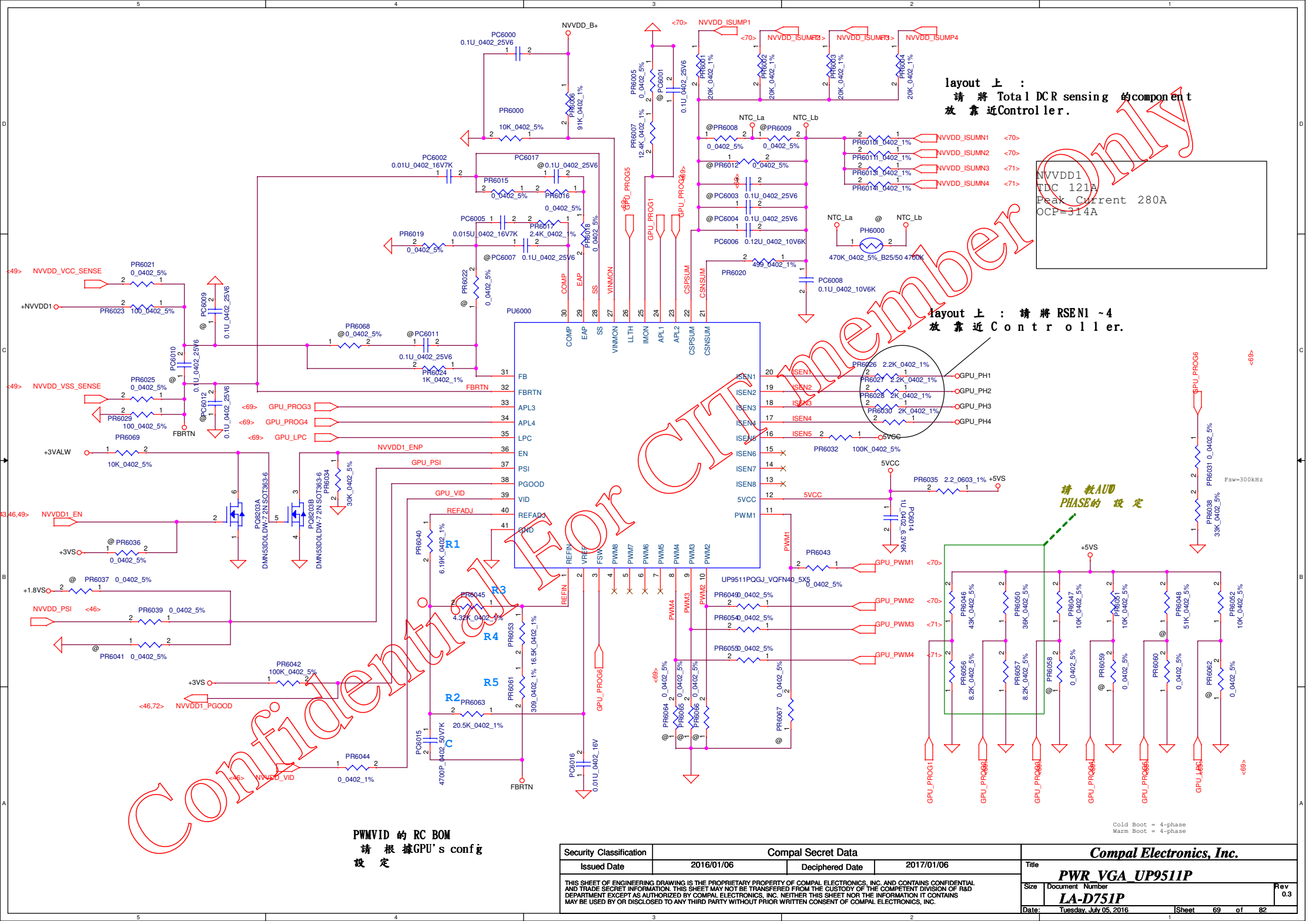


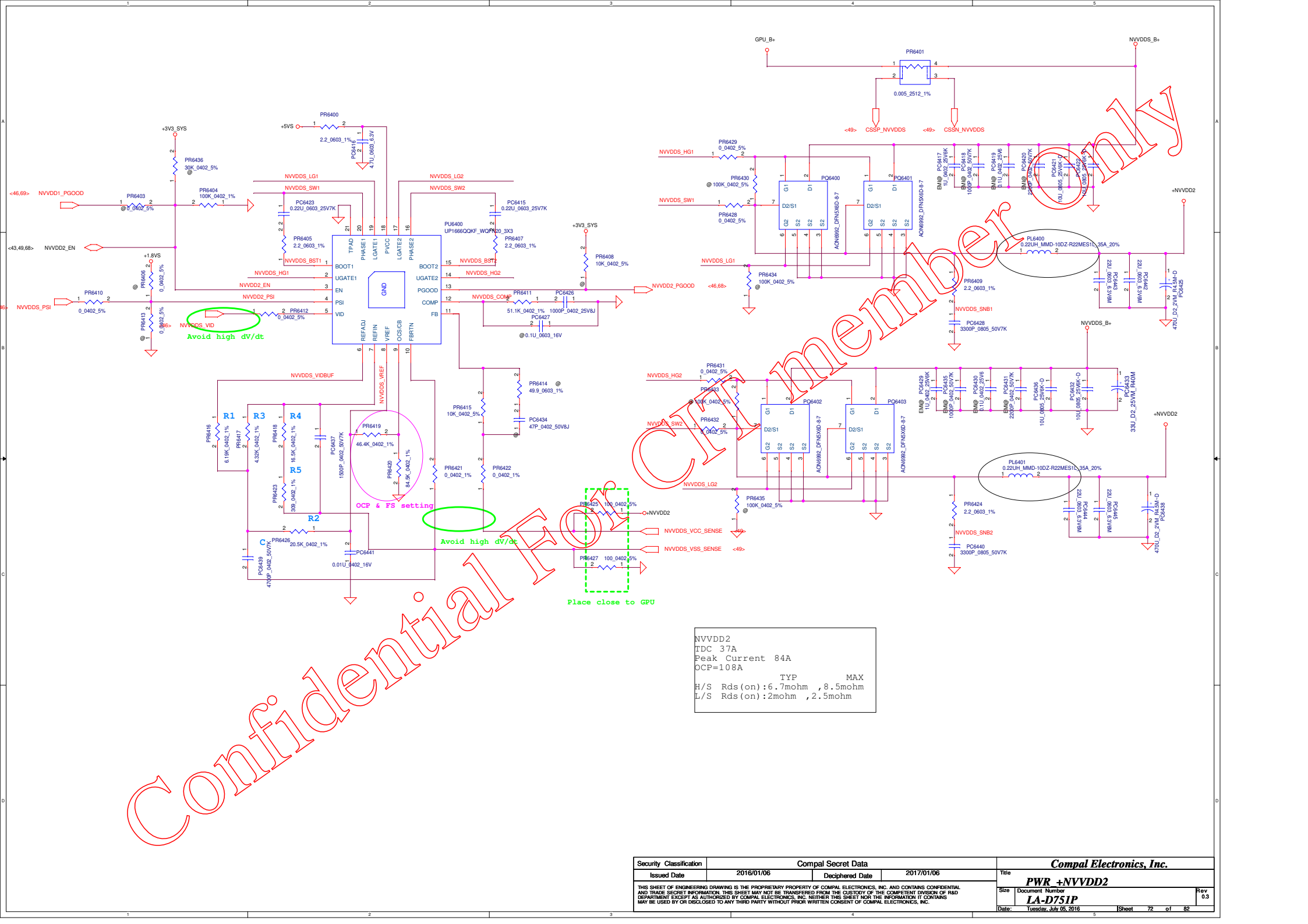
| | 22uF | 10uF | 4.7uF | 1uF | 0.1uF |
|------|------|------|-------|-----|-------|
| VDD | 3 | 3 | | 6 | |
| VDDQ | 2 | 3 | | 12 | |



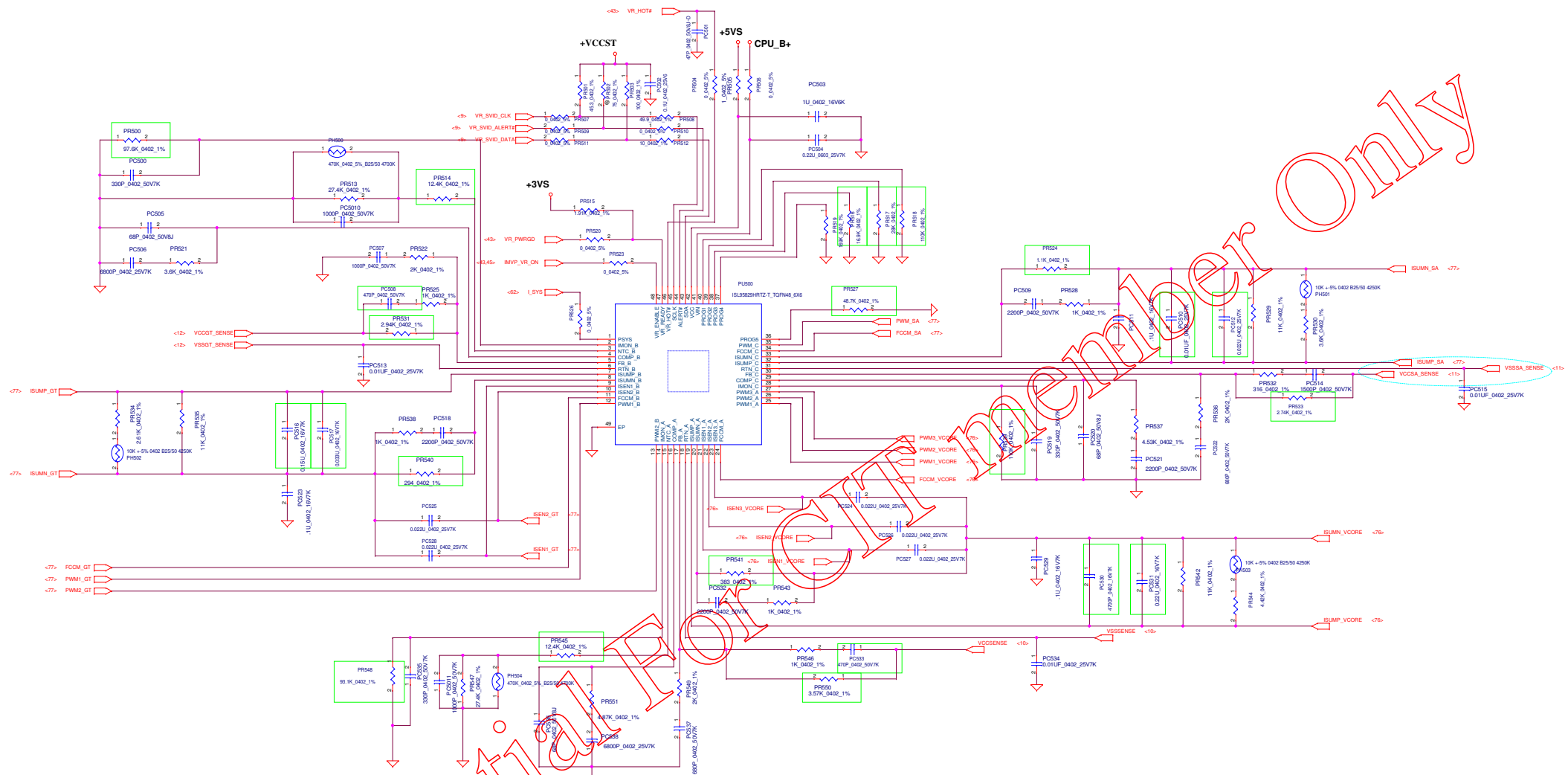








NVVDD2
TDC 37A
Peak Current 84A
OCP=108A
TYP MAX
H/S Rds(on): 6.7mohm , 8.5mohm
L/S Rds(on): 2mohm , 2.5mohm



| Security Classification | | Compal Secret Data | | Compal Electronics, Inc. | |
|--|------------|--------------------|------------|--------------------------|-------------------|
| Issued Date | 2016/01/08 | Declassified Date | 2017/01/08 | Title | PWR_VCORE ISL9585 |
| <small>THIS SHEET OF ENGINEERING DRAWING IS THE PROPRIETARY PROPERTY OF COMPAL ELECTRONICS, INC. AND CONTAINS CONFIDENTIAL AND TRADE SECRET INFORMATION. THIS SHEET MAY NOT BE REPRODUCED OR TRANSMITTED IN ANY FORM OR BY ANY MEANS, ELECTRONIC OR MECHANICAL, INCLUDING PHOTOCOPYING, RECORDING, OR BY ANY INFORMATION STORAGE AND RETRIEVAL SYSTEM, WITHOUT THE PRIOR WRITTEN CONSENT OF COMPAL ELECTRONICS, INC.</small> | | | | | |
| Doc No | LA-DSIP | Doc Rev | 1.00 | Doc Date | 2016/01/08 |

